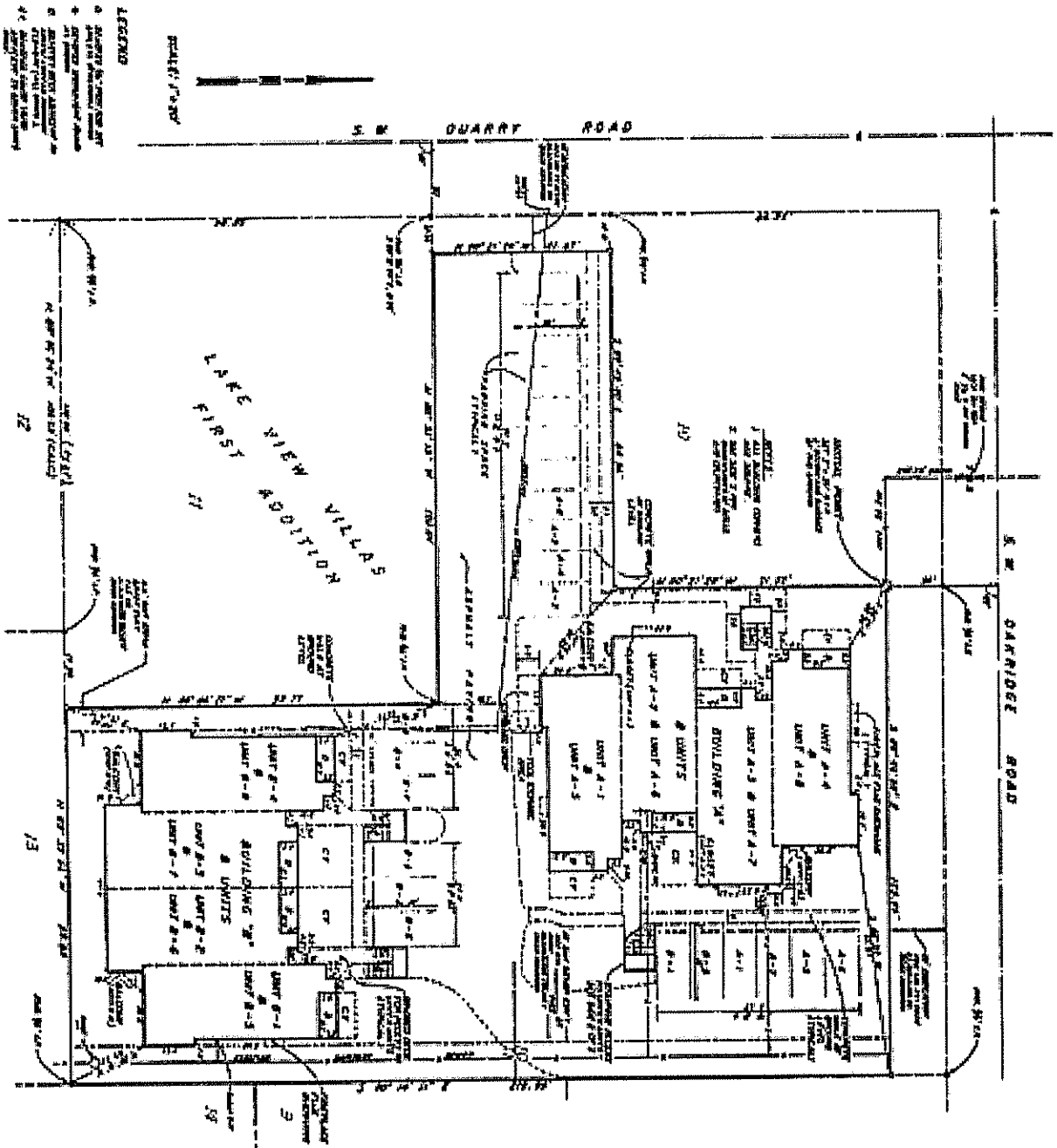


# OSWEGO WEST CONDOMINIUMS

SIDE 1 OF 2

PARTS OF LOTS 10 & 11, LAKE VIEW VILLAS - FIRST ADDITION - N.W. 1/4, S.W. 1/4, SEC. 8,  
T. 2 S., R. 1 E., W. 4 M. - CITY OF LAKE OSWEGO, CLATSOP COUNTY, OREGON  
SUBMITTED: JANUARY, 1979  
DRAFT & SURVAYS & ASSOCIATES

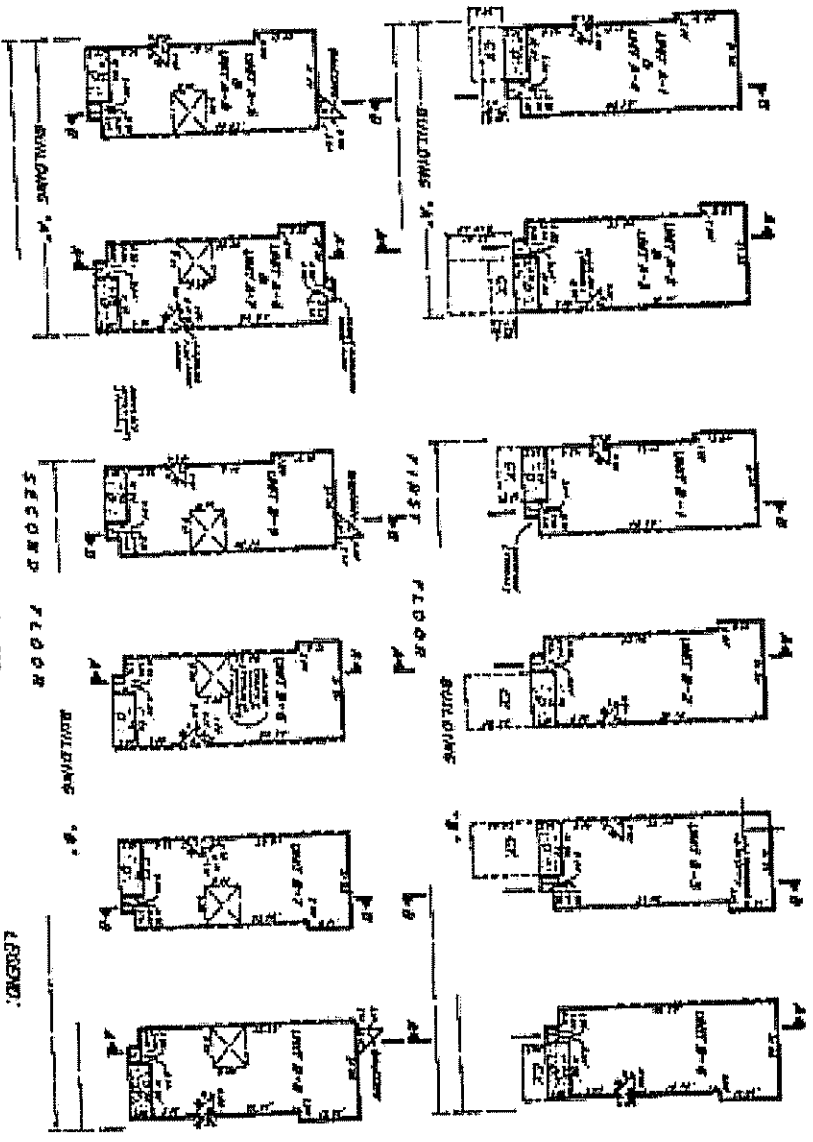


2310

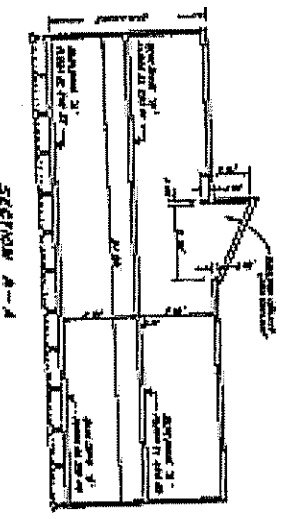
# OSWEGO WEST CONDOMINIUMS

SHEET 2 OF 2

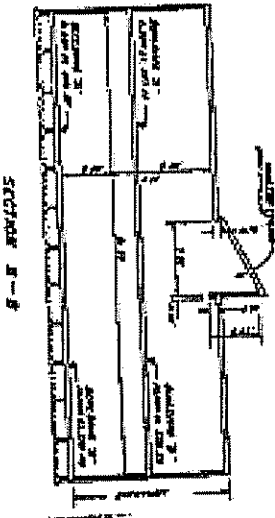
PARTS OF LOTS 10 B 11, "LAKE VIEW VILLAS" - FIRST ADDITION - NW 1/4, S.W. 1/4, SEC. 8  
 T. 2 S., R. 1 E., W. 4 M. - CITY OF LAKE OSWEGO, CLATSOP COUNTY, OREGON.  
 DRAWING: 12/15/80



FIRST FLOOR PLAN  
 UNITS: 100  
 SCALE: 1"=30'



UNITS: 100  
 ELEVATION  
 SCALE: 1"=30'



SECTION B-B

Notes: Oswego West  
 Condominiums  
 Date: 4/21/81  
 Book: 15  
 Page: 2  
 Number: 2310  
 Vol. 80, 11/15/81  
 Price: 1350  
 Time: 3:01 pm.